

Company Overview

Turbine Engine Consultants, Inc.

Worldwide Spares Support 24/7

- Serving the aviation aftermarket for over 17 years
- ASA-100 (FAA AC-0056) Accredited
- Propulsion, Auxiliary Power & Airframe Programs
- Large inventory of high quality spares
- Modern facilities and equipment
- Knowledgeable sales staff
- Rapid RFQ response
- Competitive pricing



Contact

Turbine Engine Consultants, Inc.

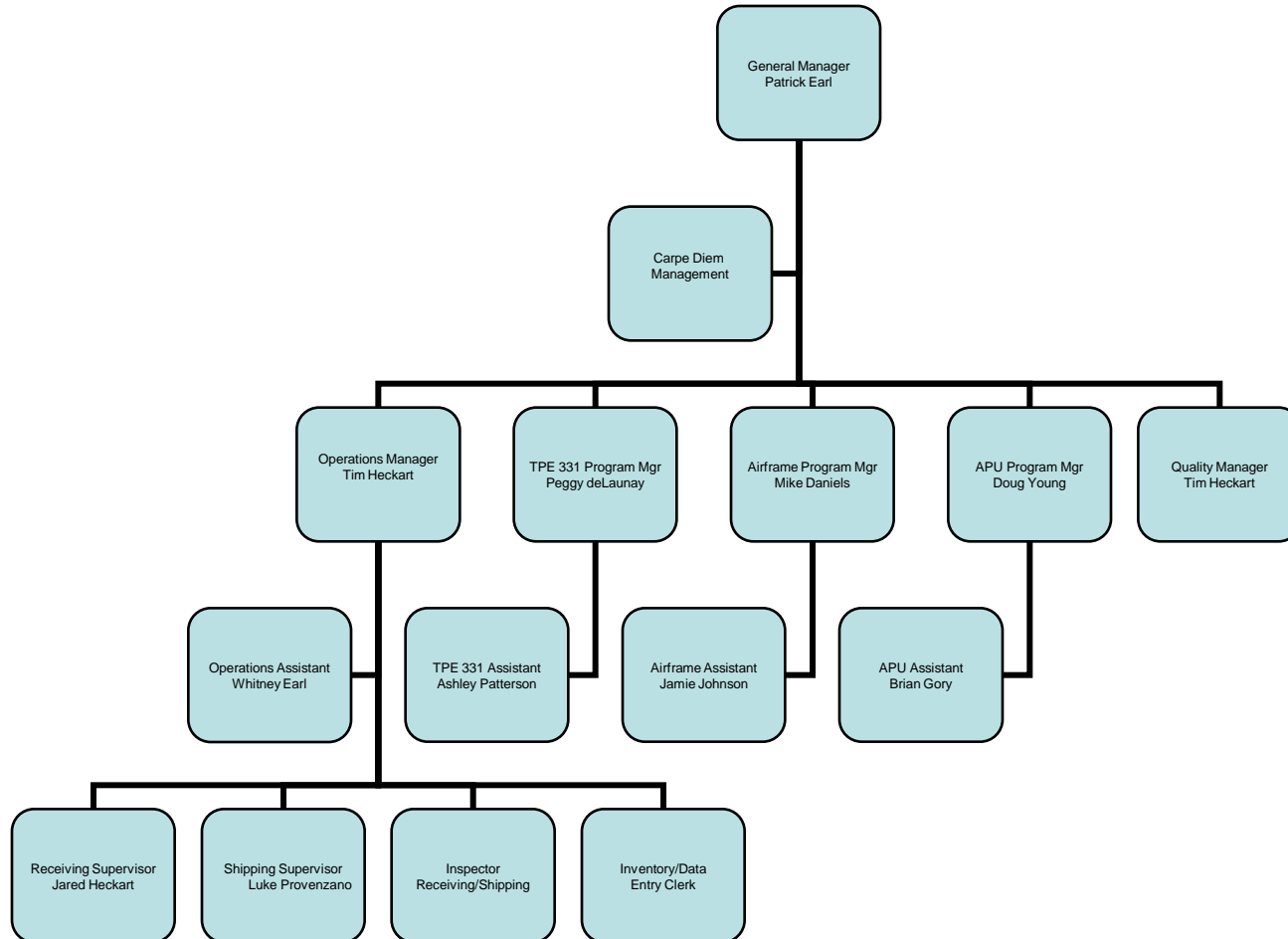
Phone: 800-949-7458
417-781-8324

Fax: 417-781-0800

E-mail: sales@teci.com

Web: www.teci.com

Company Structure



Contact

Turbine Engine Consultants, Inc.

Phone: 800-949-7458
417-781-8324

Fax: 417-781-0800

E-mail: sales@teci.com

Web: www.teci.com

Customer Base

Turbine Engine Consultants, Inc. Customers

- Overhaul and Repair Facilities
- Regional Airlines
- Corporate Operators
- Fixed Base Operators
- Parts Suppliers
- OEM's



Contact

Turbine Engine Consultants, Inc.

Phone: 800-949-7458
417-781-8324

Fax: 417-781-0800

E-mail: sales@teci.com

Web: www.teci.com

Sales Programs

Regional Airframe

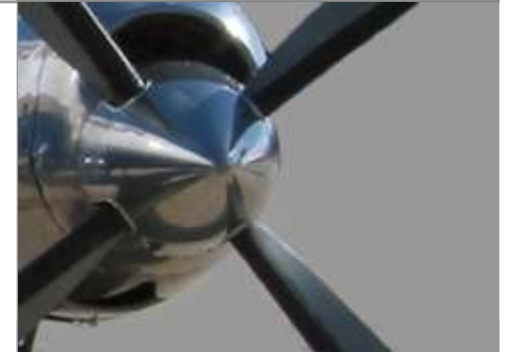
- o deHavilland Dash 8
- o BAE Jetstream 31 & 32
- o Embraer 120 brasilia
- o Lockheed Jetstar 731

Honeywell TPE331

- o TPE331-1 through -14 series engines

Auxiliary Power Units

- o Various corporate & commercial model APU
(Honeywell & Sundstrand)



Contact

Turbine Engine Consultants, Inc.

Phone: 800-949-7458
417-781-8324

Fax: 417-781-0800

E-mail: sales@teci.com

Web: www.teci.com

Regional Aircraft Spares

Aircraft Supported

- o deHavilland Dash 8 series
- o Embraer 120 Brasilia
- o BAE Jetstream 31 / 32
- o Lockheed Jetstar 731

Inventory Services

- o Rotable Leasing and Exchange Pool
- o Package Sales and Leasing
- o Inventory Management and Consignment Sales
- o Surplus Inventory Purchasing



Contact

Turbine Engine Consultants, Inc.

Phone: 800-949-7458
417-781-8324

Fax: 417-781-0800

E-mail: sales@teci.com

Web: www.teci.com

Honeywell TPE331

Honeywell TPE331-1 through -14 series

- Over 50,000 parts in stock
- High quality accessories and components
- Multiple various model engines for sales or lease
- Complete engine management
- Maintenance consulting



Contact

Turbine Engine Consultants, Inc.

Phone: 800-949-7458
417-781-8324

Fax: 417-781-0800

E-mail: sales@teci.com

Web: www.teci.com

Auxiliary Power Units

Honeywell & Sundstrand APU

- Over 15,000 parts in stock
- Various model engines for sales or lease
- High quality accessories and components
- Support for a wide range of corporate and commercial units
- Complete engine management
- Maintenance consulting



Contact

Turbine Engine Consultants, Inc.

Phone: 800-949-7458
417-781-8324

Fax: 417-781-0800

E-mail: sales@teci.com

Web: www.teci.com

Excess Inventory Management Program

We have designed a consignment program that provides you with cost reduction, scheduling flexibility, cash flow improvement, inventory reduction and investment, along with unlimited growth opportunities and expanded vendor relationships.



- Complete Turnkey Solution
Includes full sales, marketing and accounting functionality
- Low Internal Overhead
Equals greater profits for you
- Ease of Mind
Inventory is stored in our 75,000 square foot climate-controlled warehouse. All material is controlled by our world class quality system and is fully insured

Facilities & Operations



- Over 70,000 sq. ft. of warehouse space
- Secure & climate controlled environment
- Multiple loading docks
- Wide variety of shipping methods available
- 24/7 AOG Support and Counter to Counter Service
- Highly trained shipping / receiving staff
- State of the art inventory control software
- Quality assurance exceeds industry standards

Quality Assurance

Turbine Engine Consultants Inc. understands the importance of quality control in the aviation industry. This is why we have established ourselves as a leader in industry quality standards. Our customers rely on us for the highest quality engine and aircraft parts.



Contact

Turbine Engine Consultants, Inc.

Phone: 800-949-7458
417-781-8324

Fax: 417-781-0800

E-mail: sales@teci.com

Web: www.teci.com

Receiving

Receiving Inspection Process

Upon Delivery and unpacking of the part, the receiving inspection begins:

1. Part is checked for any obvious physical damage.
2. Installed plugs and caps are checked, if applicable.
3. Part number, model number, serial number and lot and/or batch number are checked against accompanying documentation.
4. Quantity and part number are verified with purchase or repair order.
5. If all criteria is met, the part is signed off and received into stock.

For proper protection, electrostatic sensitive parts are inspected at a certified ESD station.



Contact

Turbine Engine Consultants, Inc.

Phone: 800-949-7458
417-781-8324

Fax: 417-781-0800

E-mail: sales@teci.com

Web: www.teci.com

Receiving (continued)

If applicable, parts are sprayed with lubricant for proper protection before being stored or shipped.

TECI utilizes a variety of packing materials including:

- Foam injection system
- Bubble wrap (standard & ESD)
- Styrofoam peanuts

Once parts are securely packaged, they are placed in stock and segregated according to their designated condition code.



Contact

Turbine Engine Consultants, Inc.

Phone: 800-949-7458
417-781-8324

Fax: 417-781-0800

E-mail: sales@teci.com

Web: www.teci.com

Shipping

Shipping Inspection

When a part is shipped from our warehouse, it goes through the same thorough inspection and is verified with its documentation, just as when it was received. There are however, some additional requirements, which must be met before the part is shipped.

- Each shipment must have a packing slip placed on the inside and outside of the shipping container.
- The packing slip contains the part number, serial number (if applicable), quantity and condition.
- Check that the part is properly packaged to avoid possible shipping damage.
- The shipping container must be verified as being appropriate for the item being shipped.



**Quality
Assured**

Contact

Turbine Engine Consultants, Inc.

Phone: 800-949-7458
417-781-8324

Fax: 417-781-0800

E-mail: sales@teci.com

Web: www.teci.com

Shipping (cont)

Shipping Methods

Turbine Engine Consultants Inc. uses a variety of shipping agents to meet the needs of our customers.



For AOG situations when are regular couriers are unavailable, we will arrange counter-to-counter deliveries to ensure you receive your part when and where it is needed.



Contact

Turbine Engine Consultants, Inc.

Phone: 800-949-7458
417-781-8324

Fax: 417-781-0800

E-mail: sales@teci.com

Web: www.teci.com

Organizations and Trade Events

Turbine Engine Consultants, Inc. is an active member of the aviation community and participates in several industry organizations and events including:

Organizations

- o ASA
- o NAAA
- o NBAA
- o RAA
- o ACPC

Trade Events

- o AS3
- o Ebase
- o MRO
- o MRO Europe
- o Metro Operators
- o NBAA
- o NAAA
- o RAA
- o Paris & Farnborough Air Show



Contact

Turbine Engine Consultants, Inc.

Phone: 800-949-7458
417-781-8324

Fax: 417-781-0800

E-mail: sales@teci.com

Web: www.teci.com

Contact Us

Turbine Engine Consultants Incorporated

2707 E. 32nd St.
Joplin, MO 64804

Remittance Address:
PO Box 2367
Joplin, MO 64803

Phone: 800-949-7458 or 417-781-TECI
Fax : 417-781-0800
E-mail: sales@teci.com
Web : www.teci.com

TPE331 Sales

Peggy deLaunay
TPE331 Program Manager
peggy.deLaunay@teci.com

Ashley Patterson
TPE331 Sales Assistant
ashley.patterson@teci.com

APU Sales

Doug Young
APU Program Manager
doug.young@teci.com

Brian Gory
APU Sales Assistant
brian.gory@teci.com

Airframe Sales

Mike Daniels
Airframe Program Manager
mike.daniels@teci.com

Jamie Johnson
Airframe Sales Assistant
jamie.johnson@teci.com

European Support

Marko Huhtaniska
European Sales
marko.huhtaniska@cdmgt.com